



*Building our Community with Love, Forgiveness and Hope
Growing an Inspirational Learning Community*

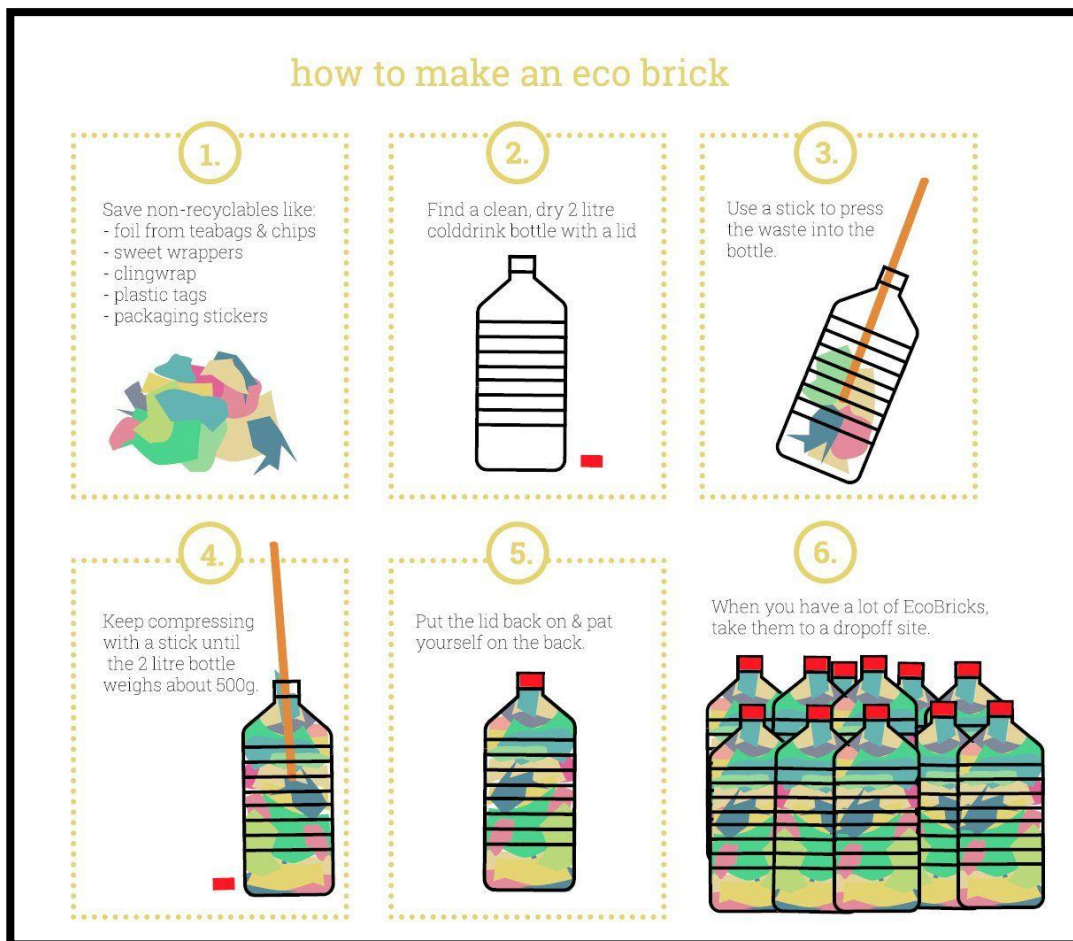
03 December 2019

Global Neighbours: EcoBricks

Dear Children and Parents,

We are writing to you to share our next initiative for this year to make the world a fairer and more sustainable place: **EcoBricks**. We are aware that with Christmas coming up there will probably be more non-recyclable plastic waste in many homes, and we would like to encourage you to join us in doing something positive for planet with this waste.

You need to stuff clean, dry plastics into the EcoBrick, packing down firmly as you go. Cut larger pieces of plastic down to more manageable pieces to prevent little pockets of air forming. Those little pockets of air will stop you from being able to fit as much plastic in.




“The school’s values of Love, Forgiveness and Hope thread through the everyday life of the school. Pupils enjoy school life and their learning at Cornerstone. Teamwork permeates through the school, with staff motivated to ‘Growing an Inspirational Learning Community.’” (Ofsted 2019)

How Much Should It Weigh?

Your ecobrick should be about 0.3g/ml. Divide the ml of your bottle by 3 to find your target weight.

bottle volume	target weight
330ml	110g
420ml	140g
500ml	167g
900ml	300g
1000ml / 1L	333g
1500ml / 1.5L	500g
2000ml / 2L	666g



Please bring into school any Ecobricks that you make so that we can encourage more families to continuing recycling in this way. When we have enough to fill the back of Mr Clarke's car we will take the Ecobricks to a local drop off facility.

Many thanks for your help with this project.

Yours sincerely,

*Scarlett
Charlie
Anna
Isaac
Mya*

*Immy
Jilli
Callum
Thomas
Emma*

The Global Neighbours Team

“The school's values of Love, Forgiveness and Hope thread through the everyday life of the school. Pupils enjoy school life and their learning at Cornerstone. Teamwork permeates through the school, with staff motivated to ‘Growing an Inspirational Learning Community.’ (Ofsted 2019)